



Bower Hill, Epping, CM16

BUTLER & STAG



A beautiful two bedroom first floor apartment located on the popular development of Theydon Bower.



Share of Freehold

- First Floor Apartment
- Two Bedrooms
- Master With En-Suite
- Modern Fitted Kitchen
- Allocated Parking
- Seconds Walk To Epping Station

The main living accommodation of the property comprises of a spacious lounge / diner, study area and a modern fitted kitchen, two bedrooms with the master benefitting from multiple fitted wardrobes and en-suite shower room with a separate family bathroom.

The ever popular development of Theydon Bower remains as such due to its proximity to Epping Tube Station and High Street which offers a wide variety of local shops & eateries.

The well manicured grounds at Theydon Bower surround the flats and also offer stunning views over open farm land of which you can walk and often see an array of wildlife.

Externally, the apartment also offers allocated parking within the gated development.





Bower Hill

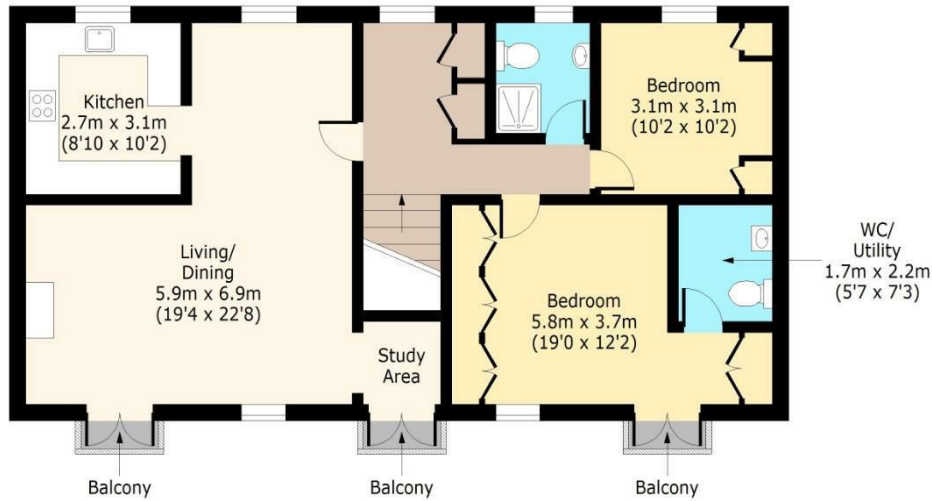
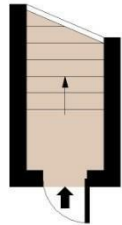


Ground Floor

Approx. 3.62 Sq. meters (39 Sq. feet)

First Floor

Approx. 93.18 Sq. meters (1003 Sq. feet)



Total area: approx. 96.80 Sq. meters (1042 Sq. feet)
For illustration purposes only - not to scale
www.lpaplus.com

BUTLER & STAG

☎ 01992 667666

🏠 4 Forest Drive, Theydon Bois, Essex, CM16 7EY

✉ theydon@butlerandstag.com

www.butlerandstag.uk

IMPORTANT NOTICE - These particulars have been prepared in good faith and they are not intended to constitute part of and offer or contract. We have not performed a structural survey on this property and the services, appliances an specific fittings have not been tested. All photographs, measurements, floor plans and distances referred to are given as a guide and should not be relied upon.